

Ruislip Residents' Association **TOWN CRIER**



Working for the people of Ruislip and Ruislip Manor

March 2026

 www.ruislipresidents.org.uk



DON'T FORGET
2026
Subscription
Due

See page 28 or visit
www.ruislipresidents.org.uk
to pay online

Our Youngest Road Steward!

See Page 17

RUISLIP RESIDENTS' ASSOCIATION
Founded 1919

PRESIDENT
Brian Cowley

VICE-PRESIDENTS
Peter Lansdown
& John Williams

CHAIR
Graham Bartram

VICE-CHAIR
Graeme Shaw

TREASURER
Nick Potter

SECRETARY
Patricia Wardle

CHIEF ROAD STEWARD
Daniel O'Neill

DEPUTY CHIEF ROAD STEWARD
Alan Wenman

COMMITTEE
Vivien Alcorn
Susan Browne
Mark Eidem
John Hawley
Susan Midgley
John Swindells
Phil Taylor

EDITOR
Graham Bartram

✉ chairman@ruislipresidents.org.uk
© 07941 295248

CONTACT US
Patricia Wardle
Ruislip Residents' Association
Mail Boxes Etc. Box No. 231
161 High Street
Ruislip, Middlesex HA4 8JY
✉ secretaryrra293@gmail.com
🌐 www.ruislipresidents.org.uk

CONTENTS

- 4 *Community Noticeboard*
- 5 *Chair's Message*
- 6 *Education News*
- 11 *Ruislip Central Horticultural Society*
- 12 *Ruislip Manor Methodist Church*
- 13 *EA Water Consultation*
- 15 *Annual General Meeting*
- 16 *Being Prepared, Together*
- 16 *RRA Newsletter*
- Emergency Planning Pullout*
- 17 *George - Our Youngest Road Steward!*
- 18 *Councillors' Comments*
- 19 *Choral Concerts*
- 20 *Primary Care in Our Area*
- 22 *Danny Beales MP*
- 25 *David Simmonds CBE MP*
- 27 *Refill Your Cup Ruislip*
- 28 *Treasurer's Corner*
- 29 *Planning Update*
- 32 *Annual General Meeting Poster*

Editorial

Bumper Issue!

This is our largest ever edition of the *Town Crier*, coming in at 36 pages! Admittedly, four of those pages are the removable emergency planning insert in the centrefold – another first.

This edition is the first two use our new short-link system to make typing in website addresses easier. Instead of typing the long link you just type rralink.uk/ followed by the five character code.

We continue our series on the religious establishments of Ruislip and Ruislip Manor, with an article on Ruislip Manor Methodist Church on page 12. You will get a chance to see another if you come to our AGM which is being held in St Paul's Church, Ruislip Manor, for the first time. There is also an article on the new Pembroke Centre in Ruislip Manor, and the Confederation that runs it.

We are still in need of a town planning officer to help Susan Browne, and people to report on health, the Lido, Ruislip High Street and Community Activities so please let me know if you are interested.

Graham Bartram

Graham Bartram, Editor Pro Tem

Please note that the views expressed in articles in the Town Crier are those of their authors and do not necessarily reflect the position of the Ruislip Residents' Association.

COMMUNITY ACTIVITIES

Vacant

POLICE LIAISON

Mark Eidem

CONSERVATION & PLANNING

Susan Browne

PUBLIC TRANSPORT

Graham Bartram

EDUCATION

Susan Midgley

RAF NORTHOLT LIAISON

Alan Wenman

WOODLANDS & ENVIRONMENT

Graeme Shaw

RUISLIP LIDO

Vacant

HEALTH

Vacant

RUISLIP RETAIL AREA

Vacant

MANOR RETAIL AREA

John Hawley

SOCIAL ACTIVITIES

Vivien Alcorn

TRAFFIC & PARKING

Mark Eidem

HS2

Phil Taylor

WEBSITE & IT

John Swindells

ASSISTANT PLANNING OFFICER

Vacant

FRIENDS OF EASTCOTE HOUSE GARDEN

🌐 www.eastcotehousegardens.org.uk

Gardening sessions take place every Tuesday and Thursday throughout the year starting at 9.30am, with occasional conservation sessions in Long Meadow as required.

Tools, refreshments and good company are provided – no previous gardening experience necessary. Meet in the car park at Eastcote House Gardens.

The Gardens Café is now open daily from 9.00am until 3.30pm.

RUISLIP, NORTHWOOD & EASTCOTE LOCAL HISTORY SOCIETY

3rd Tuesday of each month from September to April at 8.00pm at St Martin's Church Hall, High Street, Ruislip. Visitors are welcome (£3 admission). We also organise walks and outings for members during the summer months. For further information please visit our website 🌐 www.rnelhs.org.uk.

17 March	Ruislip in the Boer War	Melanie Winterbotham RNELHS Research Group Leader and Journal Editor
21 April	Breakspeare: The English Pope	Adrian Waddingham Author and Historian

WHAT'S ON AT THE LOCAL THEATRES

Some of the upcoming events at the Winston Churchill* and Compass† Theatres, check out 🌐 www.hillingdontheatres.uk for more information and to book.

1 Mar	Family Concert*	Hillingdon Philharmonic
11-14 Mar	<i>Half a Sixpence</i> *	KLOS Musical Theatre
18-21 Mar	<i>Height of the Storm</i> †	Proscenium
25-28 Mar	<i>We Will Rock You</i> †	Pastiche Musical Theatre
25-28 Mar	Joseph and the Amazing Technicolor Dreamcoat*	Youth Group Production

LET US KNOW ABOUT YOUR EVENTS

We are building a list of ALL local events on our website. If you are a member of a club or association, please get in touch with us - we'd like to feature your events! Visit 🌐 www.ruislippresidents.org.uk/events or email events@ruislippresidents.org.uk

Chair's Message



Last time I was mentioning how hot it was, and today is the latest in a series of rainy days that are making people near the Pinn and Yeading Brook nervous. You can read about the EA's consultation on the water quality of these two waterways on page 13.

The Council's financial problems continue, although the Government have given them some good news recently. They still need to borrow over £100 million, to be paid back over 20 years. It is estimated that this will cost the people of Hillingdon over £10 million each of those years in repayments. It's not just the loss of spending control - the Council's external auditors, EY, are very unhappy with the accounts and are not currently passing them. The auditors didn't just rebuke the council for their mess, their failure to address the mess, and recite the criticisms presented in their report... they additionally criticised the Council for burying that report, which they've had since 27th November, and not revealing it to anyone until the end of January.

The Rural Activities Garden Centre debacle continues, with the Friends of RAGC finally

being able to persuade the Council to declare it an Asset of Community Value, which gives it some protection from being sold.

On more positive Council news, we are working with the Council's Emergency Response Manager, Kirstie Newham, to bring you advice on your own emergency preparedness, including a pull-out form that will help you organise the information you may need (see page 16). Do visit the website mentioned to get some tips on how to "Be Prepared" - and you don't even need to join the Scouts...

Like all voluntary organisations we rely on people actually volunteering and we have a number of roles that we need help with, so please consider if you could give some time to the Association.

If you haven't paid your subscription this year, we would appreciate it if you did – use our website and click the yellow tab in the menu bar: www.ruislippresidents.org.uk

We need your subscriptions to pay for the running of the association, including printing the *Town Crier*. It's only £5!

I hope to see as many of you as possible at our meeting in March in Ruislip Manor. ♦

Graham Bartram, Chair, ☎ 07941 295248

Education News

Susan Midgley

LADY BANKES PRIMARY SCHOOL WINS HORTICULTURAL SHOW PRIZE

Having previously entered the schools' competition at Ruislip Central Horticultural Society's Spring Show, the pupils were keen to exhibit their gardening skills once again in the last Autumn Show which was held in The Barn on Sunday, September 14th.

This required careful preparation in order to have all the vegetables, fruit and flowers ready at the same time so they could be displayed together on the day. The school is fortunate to have on the staff **Ms Julie Harris Powell** as a Teaching Assistant but also a keen gardener who believes that it is important that children learn how the vegetables and fruit they see in the supermarket are grown and that they should be involved in that process.

Each Year Group had individual responsibility for growing specific items which would ultimately be part of the school's display. Reception grew potatoes, tomatoes, carrots and some flowers. Year One produced herbs, lavender and strawberries while Year Two grew beans, beetroot

and squash. Year Three had the task of creating the attractive bunting which decorated the display stall and were attached to bamboo canes donated by the Business Manager, **Tracy Nunn**. The children in all classes had to grow one sunflower and the two largest flowers showing their seeds were part of the display and the seeds harvested will be saved for planting again for next year's challenge. Families were also encouraged to contribute to this whole school community project.

The show was well attended and members of the public obviously enjoyed wandering round all the different exhibits on show. Finally at four o'clock the prize winners in the different categories, that had been judged by professionals, were announced. The schools' prize was the last one to be announced but it was certainly worth waiting for; it was won by Lady Bankes Primary School. A plaque was presented to Headteacher, **Mrs Kate Needs** who was accompanied by Julie Harris Powell, by The Mayor of Hillingdon, **Cllr Philip Corthorne** accompanied by **Cllr John Riley**.

THE MAYOR OPENS WHITEHEATH INFANT SCHOOL'S READING SHED

On Tuesday, November 4th, the Mayor of Hillingdon, **Cllr Philip Corthorne**, paid a visit to the school to open their new Reading Shed. The inspiration for this idea stems from the fact that the school encourages pupils to enjoy reading from an early age but, as the library is closed at break and lunch times, there was no opportunity for reading at play time. To enable this to become a possibility and with money raised by the active Parents' Association, a shed full of exciting books was built in the playground.

Mr Thomas Taylor, Premises Manager, spent the last summer holidays building this outdoor library. At the beginning of the new school year last September **Mrs Hall**, Headteacher, and one of the pupils filled it with beautiful books which are now very popular with the children. Following the official opening they could be seen sitting around tables in the playground reading and discussing books.

Finally it was the most important time of the morning. All the children's eyes were fixed on the Shed when the Mayor cut the red ribbon and the doors were opened. Everyone present cheered and clapped with excitement. Pupils who were School Councillors were invited to the Shed to meet the Mayor who very kindly told them he was going to arrange for them to



Presentation of the Plaque to Mrs Needs with The Mayor



The School's Winning Display



Ethan and Amber

visit the Mayor's Parlour at the Civic Centre.

The morning event was a delightful experience and hopefully all the pupils will enjoy reading for the rest of their lives due to the encouragement provided by the school and the innovation of the Reading Shed.

RUISLIP HIGH SCHOOL'S CHRISTMAS COMMUNITY EVENT

Ruislip High School held its Community Event on Thursday, December 11th. This event was organised by **Mr L Sills**, Head of Sixth Form, and his students. It is just one example of the school's close connection with their community which is an important part of its ethos.

Local residents were invited to have afternoon tea and take part in quizzes and bingo. All the refreshments and prizes were mainly donated by the students who host the event. On arrival guests were escorted to the sixth form area by one of the students and seated at one of the many tables situated there. The students were very welcoming and sociable putting guests immediately at ease by introducing themselves and inviting guests to do the same. I was fortunate to be on a table which included four delightful young people: **Amreen, James, Julian** and **Harry**.

When everyone was seated they were welcomed by Mr Sills who hoped that everyone would have some fun during the afternoon. The entertainment began with a series of quizzes introduced by Head Students, **Amber** and **Ethan**. Guests had to guess the correct word from each scrambled letters example given. This was followed by two games of Bingo. To add to the fun **Mr Elsby**, Head of Year 13, called each number by alternative introductory titles to the traditional bingo norm which caused much laughter. He was also busy throughout the afternoon serving hot drinks with the help of **Miss Vora**, Head of Year 12.

Finally Mr Sills, dressed as Santa Claus, thanked everyone present for attending. It was such a joyful occasion that visitors must have felt that the festive season had begun. Congratulations to all the teachers and students who made this event such a success.

RUISLIP HIGH SCHOOL'S WINTER CONCERT

Immediately following the Christmas Community Event visitors were escorted by sixth form students to the hall where the Concert would take place. An introduction was given by Year 11 students **Charlie** and **Nicole** who later also gave an excellent performance of "Slow Dancing in a Burning Room" by John Mayer with Nicole singing accompanied by Charlie on

the guitar. They continued to professionally introduce every performance throughout the whole concert.

Rhys and **Trissha** opened the concert with a delightful piano duet of *“Carol of the Bells”* which was followed by the **Brass Quartet’s** rendition of *“Beauty and the Beast”*. There was also a lovely performance by four female students named **Year Eleven Advanced Singers** who sang *“Read All About It”* by Emili Sandé. There were also solo performances on a variety of instruments including **Sarim Gani** playing *“Sea Horses”* by Roma Cafalla on the flute, **Roman Lisovan** gave an emotionally powerful performance on the piano of *“Prelude in C Minor”* by Rachmaninoff and **Scarlett Anderson** played *“Nocturno”* by F. Strauss on the French Horn. There was also a rendition of *“Take Five”* on the clarinet by **Ray Chan**. One performance which should not be overlooked was that given by **Leo Saunders**, lead singer of the trio **Static**, who performed *“Starman”* the David Bowie classic. We could have been watching and listening to the artist himself, he was that good! The audience loved it!

Following a diverse set of further excellent performances by the students, the audience was finally entertained by the **Concert Band** who played *“Do You Hear What I Hear?”*, *“Overture”* from *The Nutcracker* by Tchaikovsky and *“Jingle Bells”* to which the



Mr Elsby and Miss Vora



Roman Lisovan and Leo Saunders



Miss Fay Naston

audience clapped their hands, some even singing along with the band!

This was one of the best Secondary School Concerts that I have had the pleasure of attending in my role as Education Committee Member of the Ruislip Residents' Association and great credit must go to the school's Music Department led by **Miss Fay Naston** for her dedication and hard work to produce such a brilliant concert. Congratulations to other members of staff involved and all the students who must have spent hours of rehearsal time to perfect their performances.

A NEW HEADTEACHER FOR BISHOP RAMSEY SCHOOL

The Trust Board of Veritas Educational Trust has unanimously appointed **Malcolm Britton** as the Headteacher of Bishop Ramsey School.

The Chair of Trustees, **Rebecca Garton** said: "A hallmark of Malcolm's leadership is his embodiment of Christian values, which he models consistently through his interactions. He demonstrates a strong commitment to inclusivity, ensuring that every student feels valued and respected, and enabled to make the best possible progress across backgrounds and starting points.

We look expectantly to the future of Bishop Ramsey under Malcolm's leader-

ship and are fully committed to ensuring he has every opportunity to succeed."

Malcolm Britton said: "I am honoured to have the opportunity to lead Bishop Ramsey School into its next chapter. We are committed to being a place where every individual is seen, known and valued, as it is within this environment that young people truly flourish and achieve. Together, as a community, we build on our shared strengths with purpose and confidence."



Malcolm Britton

MANOR SECONDARY MODERN CLASS OF '76 LEAVING REUNION

Did you leave Manor Secondary Modern School in the hot summer of 1976?

Class mates will mark the 50th anniversary with a get-together at a venue to be announced at 7pm on Saturday 14th November 2026.

Contact Lorraine for more details:

 buskindia@hotmail.com 



Supported by the
**HS2 Community &
Environment Fund**



Funded by
UK Government

Ruislip Central Horticultural Society



The RCHS has a long and impressive history. Established in 1939 on the theme of “the encouragement and improvement of the best fruit, the choicest flowers and the most useful culinary vegetables”. The Society has continued to promote all aspects of horticulture. The society brings together experienced gardeners and novices eager to learn. Together, we can cultivate not just beautiful gardens, but a greener, more sustainable future for all.

For just £10 a year you can enjoy the following membership benefits: regular talks by well-known horticulturists, plants fairs, coach trips and outings, annual supper quiz, two shows a year at the Great Barn, AGM social, talks on cacti & succulents, up to 50% discount online with Dobies, 10% discount with Bloms bulbs and 10% discount on some local nurseries.

Last year the society applied for a grant from HS2 to fund some of our activities for a year. The panel were so impressed they asked if they could give us funding for two years! The grant we have been given has paid for new equipment and supports the talks and flower shows. This money allows

us to get really super speakers for our talks, such as Fergus Garrett of Great Dixter.

UPCOMING TALKS & EVENTS FOR 2026

- ◆ Geoff Hodge - Freelance writer, editor and broadcaster on everything horticultural.
- ◆ Charlotte Howard - Resilient Gardening for a Changing Climate.
- ◆ Sheila Das - Head of Gardens & Parks, National Trust.
- ◆ Rekha - Rekha's Kitchen Garden. Well known TV gardener.

More plans are underway, including a Summer Social and Day Trips to wonderful gardens. See our website at:

ruisliphorticultural.org.uk ◆



Carol Klein and Fergus Garrett

Ruislip Manor Methodist Church



Standing on the corner of Torrington and Ashburton Roads, Ruislip Manor Methodist Church (RMMC) has been a buzzing and vibrant community hub for over 90 years. Apart from regular Sunday morning worship (which is live-streamed on our YouTube channel), there is a wide array of activities on offer. The venue hosts: Image School of Dance, a martial arts' group, Boogie Knights (a dance-based exercise group for all ages and abilities), Slimming World and the following RMMC groups, open to all - ladies' group Fourways, Knit & Natter group, Craft Group and the Progressive Christianity group, Journeys. RMMC Friendship Teas, held monthly on a Sunday afternoon, are offered, free of charge, to any local, elderly person who'd like a lovely tea and some friendly company. Further details of all these

activities may be found on our website www.rmmc.org.uk.

A church was established on the site in 1934, as the Metroland housing estate grew around it, evolving from the original wooden hut, donated by the builders of the estate, to the original brick building, through to the current sanctuary. The builders' hut became a Scout Hut for many years; classrooms and a kitchen were added in the 50s and a new church was built in the 70s, freeing up the older church building for use exclusively as a church hall. The church hall, and wide range of classrooms of various sizes can cater for a range of activities, and, in line with Methodist ideals, RMMC is well ahead in moving towards Net Zero. There's really something here for everyone...come and see!

CONCERT

On 22nd March 2026 there will be a Sunday afternoon concert at RMMC in aid of *Action for Children*. It will feature music for piano and strings by Mozart and Dvořák, performed by the New Camerata Ensemble. For more details please visit the church's website. ♦

EA Water Consultation

Graeme Shaw

RRA attends the quarterly Thames Regional Flood & Coastal Committee to ensure we have an eye on any changes to flood risk management and the activities of statutory authorities beyond our local Council, as Lead Local Flood Authority, to include the Environment Agency and Thames Water.

There is a current consultation, "Significant Water Management Issues", which closes on May 20th 2026. You can find the consultation here:

rralink.uk/d25gn

The Environment Agency classifies England according to river basin districts, each with an existing River Basin Management Plan (RBMP). You can see the

catchment areas that this plan users here:

rralink.uk/utzww

You will find a map of the river basins, along with environmental measurements.

Our area crosses a river basin watershed: residents of Ruislip are part of the Pinn Water Body, whilst those in Ruislip Manor are part of the Yeading Brook Water Body.

The Pinn Water Body can be found at:

rralink.uk/25uc5

which takes you to Thames / Colne / Colne / Pinn - yes, they have two Colnes!

The Yeading Brook Water Body is at:

rralink.uk/fc6zc

which takes you to Thames / London / Crane Rivers and Lakes / Yeading Brook.



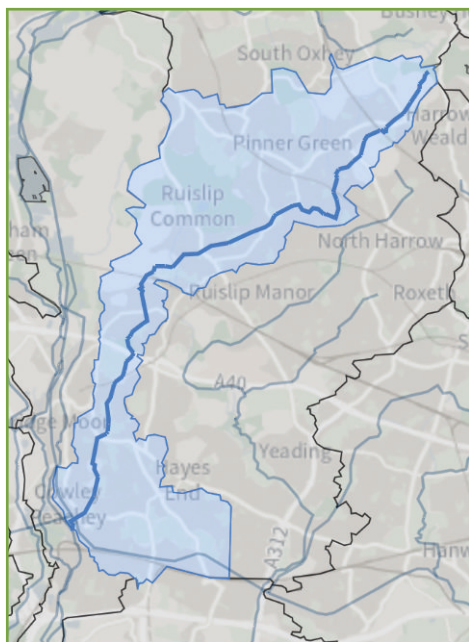
Both water bodies achieve 'Moderate ecological status'. Further detail is being sought from our local Environment Agency partners about this status.

However, certain problems do stand out:

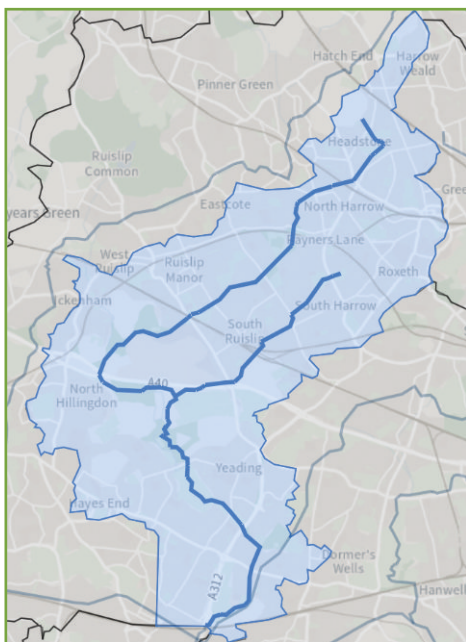
- ◆ Benzo-perilenes are the result of incomplete combustion, and are found in cigarette smoke and vehicle exhaust.
- ◆ Polybrominated diphenylethers are used as flame retardants in everyday items such as electronics, textiles and furniture foams. The latter are now banned in this country but these chemicals are regrettably persistent within the environment.

- ◆ Ammonia is typically found in river water due to domestic and industrial mis-connections. This results in foul water being plumbed into the surface water network that is designed to transfer rain from roads, pavements, other impervious surfaces, and rooves of all sorts, residential, industrial and institutional towards our local watercourses.

Please do consider responding to this consultation. ◆



Pinn River Basin



Yeadon Brook River Basin

Annual General Meeting

7.45pm, Wednesday, 25th March 2026

St Paul's Church, Thurlstone Road, Ruislip Manor HA4 0BP

For a change we are holding our AGM in Ruislip Manor, courtesy of Father Tommy Merry of St Paul's Ruislip Manor. We will be meeting in the church itself, and not in the hall.

Doors will open at 7.30pm, with the meeting starting at 7.45pm. We will have a talk by Danny Beales, the MP for the Uxbridge and South Ruislip constituency, which includes Ruislip Manor. This will be followed by the AGM business meeting and an open forum for questions from our members.



Wine, fruit juice and nibbles will be provided. Please send any items for the Open Forum to the Secretary by 18th March.

AGENDA

1. Welcome and Apologies
2. Talk by Danny Beales MP, Uxbridge and South Ruislip
3. Minutes of the Annual General Meeting 2025
4. Chair's Report
5. Treasurer's Report and Annual Accounts
6. Election of Chair and Committee 2026-2027
7. Open Forum - with questions to a panel of RRA representatives
8. Any Other Business

The meeting will end at 10pm.

Please send any nominations for election to the Secretary by Wednesday, 18th March.

The Autumn General Meeting will be on the 6th October 2026. ◆



Being Prepared, Together

Kirstie Newham, Emergency Response Manager

Emergencies can happen with little or no warning — from power cuts and severe weather to flooding. While we cannot prevent every emergency, there are simple steps we can all take to be better prepared and to look after ourselves, our families, and our neighbours.

To help with this Hillingdon Council have developed a Household Emergency Plan template for residents. It is designed to be easy to use and adaptable to your own circumstances. The plan helps you think in advance about what you would do in an emergency, how you would stay informed, and how you would support those who may need extra help.

Spending a short amount of time completing the plan now could make a real difference if the unexpected happens.

You can find the plan template as the centrefold of this magazine (ie. opposite this page). It is printed on plain paper to make it easier to write on and should be easily removable (you may need to pry up the staples). You will also find it on the Council website along with further guidance on household emergency planning and emergency preparedness, on our website at:

rralink.uk/jwyvw ◆

RRA Newsletter

Keep up-to-date with local issues between *Town Crier* magazines by signing up for our email newsletter. We send news and updates on a range of topics and events in, around, and concerning Ruislip and Ruislip Manor.

Our newsletters also provide updates on

the ongoing issues at Ruislip Lido and the results of our surveys on garden waste collections. Don't miss out on important local information.

Sign up at:

ruislipresidents.org.uk/newsletter/ ◆

Household emergency plan

What routes can we take to evacuate our home?

--

Where will we meet if we have to evacuate our home?

--

Who will pick the children up from school if I/we are unable to?

Name	Contact details

Who will look after our pets if I/we are unable to?

Name	Contact details

Who can we stay with if we are evacuated or cannot stay at home?

Name	Contact details	Address



Where is the shut off for:	
Gas	
Water	
Electricity	

Vulnerable neighbours, friends and family to check on during emergencies and extreme weather. If I/we are vulnerable, who will check on us?			
Name:	Contact details:	Carer details (if applicable):	Address:

Insurance	Provider	Policy number	Contact number/ email
Building (and contents)			
Property			
Car			
Personal/health			
Other			

Emergency and non-emergency phone numbers

Emergency services (police, fire, ambulance, coastguard)	999 or 112
NHS non-emergency	111
Police non-emergency	101
Power cuts and electricity emergencies	105
Affinity Water emergencies	0345 357 2407
Thames Water sewage emergencies	0800 316 9800
Floodline	0345 988 1188
Cadent Gas emergencies	0800 111 999
Hillingdon Council	01895 250111
Doctor's surgery	
School	

Information sources

BBC London Radio

94.9 FM

Capital FM

95.8 FM

LBC

97.3 FM

Hillingdon Council

 www.hillingdon.gov.uk

 @Hillingdon

 @hillingtoncouncil

 londonboroughofhillington

 www.hillingdon.gov.uk/whatsapp

Metropolitan Police

 @metpoliceuk

 @metpolice_uk

 metpoliceuk

MET Office UK Weather Warnings

 weather.metoffice.gov.uk/warnings-and-advice/uk-warnings

Flood Alerts

 check-for-flooding.service.gov.uk/alerts-and-warnings

London Fire Brigade Incident Updates

 www.london-fire.gov.uk/incidents

Grab-and-go bags

A grab-and-go bag is a small emergency kit that is easy to take with you if you need to leave right away. It's a good idea to make a grab-and-go bag for your home, workplace and vehicle. Each member of the household should have their own bag.

Where are our grab-and-go bags located?

Grab-and-go bag checklist

- | | |
|---|---|
| <input type="checkbox"/> Copy of household emergency plan | <input type="checkbox"/> Power bank |
| <input type="checkbox"/> Long life food/snacks | <input type="checkbox"/> First aid kit |
| <input type="checkbox"/> Bottled water | <input type="checkbox"/> Personal toiletries |
| <input type="checkbox"/> Prescription medication | <input type="checkbox"/> Blanket |
| <input type="checkbox"/> Seasonal clothes | <input type="checkbox"/> Baby items (if applicable) |
| <input type="checkbox"/> Wind up/battery-powered radio | <input type="checkbox"/> Pet items (if applicable) |
| <input type="checkbox"/> Cash in small bills | <input type="checkbox"/> Map |
| <input type="checkbox"/> Important documents, insurance papers and ID | <input type="checkbox"/> Whistle |
| <input type="checkbox"/> Torch | <input type="checkbox"/> Pen and notepad |
| <input type="checkbox"/> Phone charger | <input type="checkbox"/> Spare keys (car and house) |

Other information

**Store this document in a waterproof resealable bag in your grab-and-go bag.
For more printable copies, visit www.hillingdon.gov.uk/emergency-plan.**

George - Our Youngest Road Steward!

QUESTIONS & ANSWERS WITH GEORGE, AGE 6 (see cover)

What do you enjoy the most about delivering the Town Crier?

I just like delivering them! I like seeing people's different doors and letterboxes. Sometimes when I'm delivering people open the door and then I can say hi! (Aside: they should mention the roads I deliver to so I can wave at more people because they'll know who I am). Once I delivered to the High Street and I got lots of lollipops and sweets from the shops for free!!!

What is the hardest part?

That we don't do it often. Why is there only two in a year? Can there be three or four? Also Mummy and Daddy won't go out when it's super raining.

How do you keep safe when delivering to a house with dogs?

Do we deliver to houses with dogs? There is that one with the beware of the dog sticker on the gate but we've never seen a dog. (Mum: but what if there was a dog?) Dunno probably just crack on!

How do you manage the time it takes to deliver along with school work?

I'm just in Year 1. So I don't get much homework. When I started when I was in nursery I had no homework. (Mum- but does it take up a lot of time?) No hardly any. That's why I ask you each time to sign up to more streets. (Aside: can you ask him now if we can have more streets this time).

What do your friends say?

They tell me at school that I delivered to their grandma's house or even theirs. They see me on their doorbells! Last year my friend Rae heard me delivering it! Also once I was delivering down the High Street and I saw my friend Cian in a cafe and then he joined me delivering. That was funny.

What are your favourite places in Ruislip?

The best park is Noli & Pop's park (Mum: that's Warrender Park) because of the zip wire. Manor Farm for my favourite library where all the nice librarians are. And the duck pond. I like Garland's Bakery where we get crusty bread and they let you pick which colour smarties on your Peppa Pig cookies! ♦

Councillors' Comments

Ruislip Ward – Philip Corthorne, John Riley, Peter Smallwood OBE
 Ruislip Manor Ward – Douglas Mills, Susan O'Brien



**Philip
Corthorne**



**John
Riley**



**Peter
Smallwood OBE**



**Douglas
Mills**



**Susan
O'Brien**

As we write this edition of the *Town Crier*, there has been a great deal of activity across Ruislip and Ruislip Manor, and we wanted to update residents on several local issues we have been working on.

Work has continued in Ruislip Manor to oppose inappropriate Houses in Multiple Occupation (HMOs), responding to concerns raised by residents. In Ruislip, an alleged non-compliant HMO has also been reported and is under investigation. This work is supported by the Council's Article 4 Direction, which requires planning permission for new HMOs and strengthens how the Council monitors and manages their impact on neighbourhoods.

We have also been leading a campaign to oppose a proposed 24-hour, seven-days-a-week arcade in Ruislip High Street. The

proposal generated significant concern locally, with almost 1,200 residents signing a petition in opposition. At the time of writing, the planning outcome is still awaited.

Since we last wrote to you, the Urgent Care Unit at Mount Vernon Hospital has closed. While we had hoped for late intervention from the Secretary of State for Health, this did not happen. We would like to thank the many thousands of residents who supported the campaign. We are now working with local health partners to ensure appropriate interim provision is in place while new health hubs remain several years away.

It has also been good to see local centres brought to life through community events. Ruislip Manor once again hosted a suc-

cessful Fun Day, and we thank the Ruislip Manor Chamber of Commerce for their efforts. In Ruislip, residents also enjoyed a Christmas lights switch-on for the first time in several years, supported by brilliant performances from pupils at BWI School.

At the time of writing, we are opposing the proposed development of six houses on St Martin's Car Park. This reflects concerns about overdevelopment, the character of

the area, and traffic and access issues, rather than opposition to new housing in principle.

Finally, this will be the last time we write to you before the upcoming local elections. While this is not the place for politics, we would like to thank residents in Ruislip and Ruislip Manor for the advice, feedback, and support you have given us over the past four years. ♦

Choral Concerts

HARROW CHORAL SOCIETY

Sacred Music for a Spring Evening

Rehearsals are underway for Harrow Choral Society's Spring Concert at 5:30pm on Saturday 28th March at St Alban's Church, North Harrow, when the choir will sing Dvořák's sublime *Stabat Mater*, his best known, and most often performed, sacred work. The choir is delighted to welcome Guest Conductor Jennifer Sterling and will be accompanied by the Byron Ensemble. Soloists will be Milly Forrest (Soprano), Suzie Purkis (Mezzo soprano), Jonathan Cooke (Tenor) and Ross Cumming (Baritone). ♦

Tickets: £25, under 18s £2

🌐 www.harrowchoral.org.uk

✉ boxoffice@harrowchoral.org.uk

☎ 07794 253463

EASTCOTE & RUISLIP CHORAL SOCIETY

An Evening of American Music

Our Summer Concert programme includes music by Leonard Bernstein, Irving Berlin and others. The concert starts at 7:30pm on Saturday 4th July at Douay Martyrs School, Edinburgh Drive, Ickenham UB10 8QY.

The choir meets every Tuesday from 8.00 – 10.00pm at Ruislip Methodist Church Hall, Ickenham Road, Ruislip HA4 7BZ. New members are welcome. No audition is required. ♦

Tickets: £17, under 12s free

🌐 www.eastcote-ruislip-choral.org

Primary Care in Our Area

THE PEMBROKE CENTRE: A NEW ERA FOR LOCAL NHS CARE

A Modern Health Hub in the Heart of Ruislip

The Pembroke Centre isn't your typical GP surgery. It's a growing NHS hub offering evening and weekend GP appointments, urgent care and specialist clinics – all under one roof and close to home.

"It's not a walk-in service, but your GP can book you in when it's the best option."

What is It?

Located in Ruislip Manor and run by The Confederation, Hillingdon CIC (see next page), the Pembroke Centre supports local practices by hosting services that are better delivered together – from blood tests to paediatric clinics.



Why It Matters

- ◆ Reduces travel to hospital
- ◆ Offers evening and weekend appointments
- ◆ Supports both physical and mental health
- ◆ Helps when your GP is fully booked

Services You Might Be Referred For

- ◆ GP Appointments in the evenings or at weekends
- ◆ Same Day GP appointments
- ◆ Adult & Child Blood Tests
- ◆ Community Paediatric Clinics

Appointments are made via your GP, NHS 111 or the Urgent Care Centre at Hillingdon Hospital – not directly.

A Building Saved for Health

When the council planned to sell the site in 2023, local GPs stepped in. Using pooled funds, The Confederation purchased the building to keep it for NHS use.

"Instead of flats, we now have a growing health hub for the whole community."

THE CONFEDERATION: YOUR GPs, WORKING TOGETHER

The Not-for-Profit Behind the Pembroke Centre

The Confederation, Hillingdon CIC is a community interest company owned by 42 GP practices in the borough. It was created to protect and strengthen local NHS care – by working together, not in isolation.



“Our GPs have always prioritised patient care over bureaucracy.”

What The Confederation Does

- ◆ Provide GP appointments in the evenings, weekends and for urgent on the day needs
- ◆ Employ pharmacists, physios, social prescribers and more
- ◆ Support practices with digital tools
- ◆ Deliver specialist services like spirometry and paediatrics

Trusted Local Partnerships

The Confederation works closely with the London Borough of Hillingdon, Central and North West London Foundation Trust

(CNWL), The Hillingdon Hospitals, and the voluntary sector – all with one goal: better, more accessible care for residents.



Why It Matters

By sharing staff, systems, and services, practices can focus on what matters most: caring for patients. It’s a model that proved its worth during the pandemic – and continues to evolve.



“It’s about making care better, faster, and closer to home.”

Explore their work:

www.confederationhillingdon.nhs.uk

Danny Beales MP

MP for Uxbridge & South Ruislip



I want to wish all residents of Ruislip a Happy New Year. Christmas now feels a distant memory, and we're in full swing into the new year.

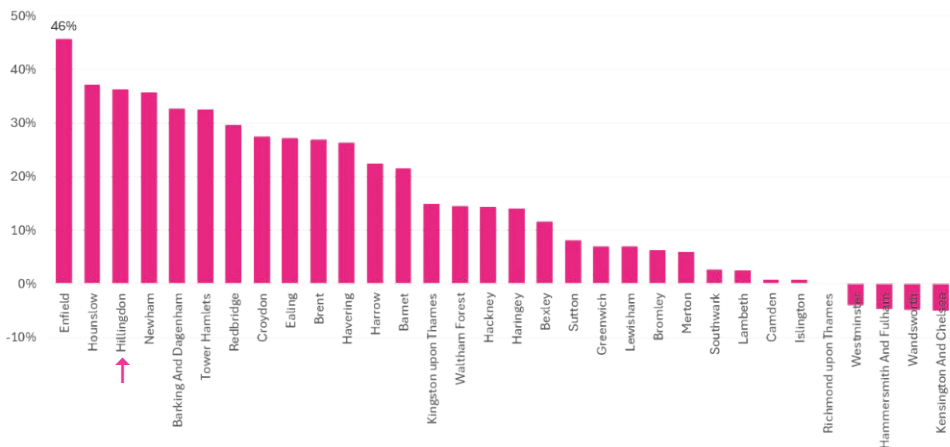
2026 is shaping up to be an interesting one for us here in Hillingdon. As the Member of Parliament for Uxbridge and South Ruislip, I will keep holding governments – both local and national – to account and fighting for investment in our area.

Government: an extra £126.7 million over the coming years. I've been campaigning for Hillingdon to get the funding it needs as it faces the challenges of the modern world. Under previous Conservative Governments, local authorities like ours were deprived of funding, and Hillingdon saw a 7% drop in core spending power under the last settlement. I am delighted the new Government has awarded a 47.1% increase throughout this Parliament, one of the biggest boosts in the country.

At the end of last year, Hillingdon Council received an early Christmas gift from the

This doesn't mean the end of financial troubles at the Council. Serious concerns

Core Spending Power Change from 2025-26 to 2028-29



remain around financial mismanagement. With stories breaking of ex-councillors having debts written off, and years of underinvestment in preventative services, the council must take a different path. Proper governance needs to take place to ensure council taxpayers' money is invested wisely. I've written to the Minister for Local Government to raise my concerns and outline the need for intervention to ensure this extra investment is not frittered away through further reckless decisions.



The Pembroke Centre

In November, we welcomed Stephen Kinnock, the Minister of State for Health, to the Pembroke Centre in Ruislip Manor – the site of Hillingdon's first neighbourhood hub. Our borough was chosen as a pilot scheme for the Government's neighbourhood health hub programme, helping residents access care quicker. The Pembroke Centre epitomises the Government's commitment to offer healthcare closer to home, meaning greater convenience for residents and alleviating pressure on our hospitals. Thanks to the Hillingdon healthcare community for their hard work

getting the model started. These services will be expanded over time and are part of a proposal to have three hubs across the borough, alongside a fully funded brand-new Hillingdon Hospital.

I was delighted to host the Hillingdon Interfaith Community in Parliament – bringing together leaders and members of the Jewish, Muslim, Christian, Hindu and Sikh communities to discuss how we can draw on our values of partnership and unity to tackle rising rates of hate crime and division in our borough.

This was a welcome reminder of how our community comes together in the face of division. In recent months, I've had constituents contact me describing feeling unsafe in the place they call home. Hillingdon is a place that is made stronger by our diversity – not weaker – and no one should feel scared because of the colour of their skin or the country they were born in. In the face of violent protests that took place in the borough last year, that saw police officers assaulted and property damaged, I've been disappointed by the council's failure to promote community cohesion. That's why I launched Hillingdon Together, a community cohesion initiative building on the great work already happening across our borough. Hillingdon Together is a coalition of residents, faith leaders, charities, schools and more standing against forces that seek to sow



division. If you want to get involved or hear more about the work we're doing, please contact my office.

I know how concerned residents across the borough are regarding the rise of unregulated HMOs in the area. Despite the Hillingdon Labour Group putting forward a motion nearly a year ago calling for the introduction of licensing controls, only recently has a consultation taken place. I've raised this issue in Parliament, calling for all governments to take action to stop the spread of unregulated HMOs that lack necessary provisions.

It's incredibly concerning to hear of another spate of burglaries occurring in South Ruislip. I'm in touch with the neighbourhood police to find out what action has been taken to identify the perpetrators and bring justice. We need to ensure the police are empowered to keep our streets safe. Following our campaign, Hayes Police Station front counter will remain open and the Met Police have guaranteed the long-term future of Uxbridge

Police Station with a previous proposal to sell the building thwarted. I'm continuing to campaign for the reopening of the cells and front desk at Uxbridge. The police have also launched a new online service for direct access to key informa-

tion and advice. You can sign up here:

www.metengage.co.uk

I met Secretary of State for Education, Bridget Phillipson, following the submission of my findings from last year's local SEND consultation. I am delighted that the Government has announced a huge funding boost of £200 million specifically for essential training for school and early years staff – one of the key areas identified in the report. This means teachers having the skills they need to support SEN children to thrive in mainstream schooling. As we await further details on SEND reform, I'll continue to ensure the voices of Uxbridge and South Ruislip are heard.

There is much to do in 2026, and my focus will always be on delivering for residents across Ruislip and beyond. Whether attending an advice surgery, joining a coffee morning, or seeking support, you can find events and contact details here:

[dannybeales.com](https://www.dannybeales.com)

01895 913563

danny.beales.mp@parliament.uk ♦

David Simmonds CBE MP

MP for Ruislip, Northwood & Pinner



I begin by belatedly wishing residents in Ruislip a Happy New Year. I hope that 2026 has started positively.

The Department for Transport has recently introduced a system to measure road maintenance and investment, and I am delighted to see that Hillingdon has received an overall rating of 'green'. We all know how important car travel is in our local area and are fortunate to have a council that makes good, safe roads a priority. After a tough winter, in which we have seen freezing temperatures interspersed with heavy rainfall, it is particularly important for residents to have a council that prioritises local transport needs.

I am also pleased to note that repair work has started on the Priory Café. Residents will be aware of the damage caused to the Grade II listed building after a car drove into the shop front last summer. I have since been pressing Hillingdon Council to ensure that this historic part of the street scene in Ruislip is restored, and I welcome

the progress that is being made. I look forward to seeing these important buildings returning to use.



Damage to the Priory Café

I have been contacted by residents who are concerned about the planning application for six terraced houses on what is currently the St Martin's Approach car park. I understand there are objections on several grounds; the plans breach the statutory duty of the council towards the Ruislip Village Conservation Area, visual harm to Manor Farm and Ruislip War Memorial, as well as the impact on the highway and parking provision. While MPs cannot interfere in planning decisions, I share the concerns of residents, and I am working with the local councillor team to

ensure these are fully considered before a decision is made.



Plans for St Martin's Approach

In Parliament, I have raised the plight of residents who are consistently met with delays, disruption and cancellation on our tube network. As someone who regularly uses both the Metropolitan and Piccadilly lines, I have enormous sympathy with these frustrations. Now, with the Mayor of London planning to increase tube fares by 5.9% this year, it is simply unacceptable for this inadequate service to continue.



Escalating this matter in Transport Questions, the Secretary of State, Heidi Alexander, committed to raising my concerns with London's Transport Commissioner, Andy Lord. We shall see if there is any meaningful change.

Also on the Underground, I welcome the news that step-free feasibility work is to start at Ruislip Station in 2026. TfL said: "Dependent on deliverability and funding, we'd be looking to do a concept design during 2027, detailed design during 2028 and get on site in 2029." This is a welcome development toward improving travel across our Tube network for residents who require additional assistance.

Finally, I was pleased to meet with pupils from Bishop Winnington-Ingram CofE School following their recent tour of Parliament. It is always a pleasure to welcome schools, residents and local groups to Westminster, and I remind readers that free 'Inside UK Parliament' tours can be booked via my office.

Locally, I continue to hold my regular surgeries, which take place in high street locations around the constituency, including here in Ruislip. If you require any assistance from my office, please use the contact information below:

☎ 020 3545 2462

✉ david.simmonds.mp@parliament.uk

🌐 davidsimmonds.org.uk ♦

Refill Your Cup Ruislip

Pay-by-weight refill comes to Ruislip

Back in 2019 Laura and Natalie met at Hotpod Yoga Ruislip and haven't looked back since. Bonding over a shared love of running and finding sustainable alternatives, they pounded the streets of Ruislip for many years, sharing stories, hopes and dreams – in the process deciding to join forces and create Hillingdon's very first zero-waste store.

They've now turned their dream into a reality and bring to you Refill Your Cup Ruislip. Their mission is to enable the local community to reduce waste, have a positive impact on their environment, and improve their wellbeing by making changes to their buying habits.

In essence RYC is primarily a pay-by-weight refill store, meaning you can take your own containers into the store and fill them with your chosen refill product, of which there are over 200! There is no minimum weight which means that you only buy what you need, as a result saving money and reducing food waste. Don't worry if you forget your containers, brown paper bags are provided and there is a selection of thoroughly cleaned pre-loved containers which can be taken free of charge.

RYC is a local hub where customers can buy food without waste in an accessible, affordable, and sustainable way. From dried goods to personal hygiene, candles to making your own freshly ground nut butter, with a focus on selling locally sourced products.

Their store has community at heart; they host a fortnightly run club on Sunday at 8:30am, running 5k with tea and coffee in the store afterwards. They are also offering workshops and community gatherings throughout 2026, starting with several 'meet the maker' events profiling local producers and much more. Details will be advertised in store and on social media.

Laura and Natalie can't wait to welcome you in store. Follow them on social media: Instagram [@Refillyourcup_Ruislip](#) Facebook [@RefillyourcupRuislip](#) ♦



Treasurer's Corner

Nick Potter

It's time to renew your subscription to Ruislip Residents' Association, if you haven't already done so. The money is essential for the RRA to continue to represent the interests of Ruislip and Ruislip Manor residents, to produce the *Town Crier* and fund our other work.

Subscriptions remain at £5, but please continue with your generous donations which are a very necessary part of our funding.

You can pay your subscription online at:

 www.ruislipresidents.org.uk

and click on the yellow "Pay Your Subs" button in the menu bar. Alternatively, you can fill in the form below and post/deliver in a sealed envelope it to RRA, Box No. 231, Mail Boxes Etc., Rye House, 161 High St, Ruislip HA4 8JY or drop it in to Mail Boxes Etc., (near Ruislip Station) or Chimsons Chemist, 29 Victoria Road (near to Ruislip Manor Station). ♦

Please detach and return this form if you wish to pay your RRA subscription by cash or cheque:



Post to: RRA, Box No. 231, Mail Boxes Etc., 161 High Street, Ruislip, Middlesex HA4 8JY or hand deliver to Mail Boxes Etc. or Chimsons Chemist (Ruislip Manor) in an envelope.

Please find enclosed £5.00 for the 2026 subscription and a donation of £ giving a total of £ which is paid by cash*/cheque* (* please circle method chosen)

Cheques should be made payable to 'Ruislip Residents' Association'. Please do not send coins by post, and avoid using staples or sellotape. The cashing of your cheque is proof of its receipt.

Name(s):

Address:

..... Post Code:

Please supply your email address if you are interested in helping to deliver the *Town Crier*.

Email address:

Planning Update

Susan Browne

WITHIN CONSERVATION AREAS

Old CAB Building and the St Martin's Approach Car park

At the time of writing there is a lot of local opposition to the Planning Application on the site of the old CAB building and the St Martin's Approach Car park, Ref: 49461/APP/2025/3009. The RRA are not against developing some houses along St Martin's Approach and adding parking spaces on the site of the previous CAB building but

will be objecting to these proposals. No archaeological dig has been planned in this historically sensitive area close to the motte and there are concerns regarding the design, size and overbearing presence of the row of six terraced houses. The RRA disagree with the argument presented that there are currently 36 "unusable" parking spaces in the St Martin's Approach car park. We have seen these parking spaces occupied because the car park

KEY RECENT DECISIONS

Address	Application
2 Midcroft, Old Petrol Station 4918/APP/ 2022/2303 rralink.uk/23wwb Approved 30/01/2026	A 4-storey residential building comprising of 7 flats have not been decided. Revised plans were submitted in June 2025.
25 St Martin's Approach 47351/APP/2023/3555 rralink.uk/hs6n2 Approved 12/09/2025	Erection of a single storey mono-pitched side extension with 4 rooflights in the new roof slope; first floor rear extension; 2 storey front extension; change in roof form & conversion of roof space into habitable accommodation; erection of a rear dormer; addition of a roof lantern; conversion of garage to habitable use ; alterations to fenestration to the front, side and rear elevations; and addition of a front porch.
82-84 High Street, Old Lloyds Bank 78935/APP/2025/2287 rralink.uk/2strs Approved 16/01/2026	Creation of 5 self-contained flats with associated cycle and bin storage, following the change of use of first floor from office (Class E) to residential (Class C3), the erection of a 2-storey rear extension at 1st floor level, an infill 1st floor extension, and the retention and reconfiguration of the Class E unit at ground floor level with alterations to fenestration.
9 Kingsend Waitrose 36969/APP/2025/2303 rralink.uk/66pxz Approved 22/01/2026	Facade alteration for the installation of On Demand Grocery Hatch (ODG) at ground floor level, with associated parking space for delivery vehicles

is used extensively during the year by visitors to the Manor Farm Complex including Manor Farm library, St Martin's Church and Hall, Sunday Markets and the High Street for shopping and hospitality.

The proposals will create a net loss of 33 parking spaces, (38 spaces from the St Martin's Approach car park but an extra 5 spaces at WCH car park). There is no explanation how that is proposed to be managed given the WCH car park is

locked if no events are taking place). No transport or traffic assessment has been included to show how the displaced cars from a significantly smaller capacity car park, or the relocated entrance to the car park will affect congestion, road or pedestrian safety.

UNDECIDED PLANS

There is no news regarding proposals for '24/7 Bingo Hall' at 73 High Street, or at The Orchard.

RECENT APPEAL DECISIONS

Address	Application
65 High Street, above HSBC 6786/APP/2024/2989 🌐 rralink.uk/gnfxh (Appeal ref 10323) DISMISSED 19/12/2025	Proposed first floor new build self-contained two bedroom dwelling on top of rear of existing building, with associated bin and bicycle storage at ground level.
32 Kingsend 9894/APP/2023/3569 🌐 rralink.uk/vzrrw (Appeal ref 10271) ALLOWED 01/12/2025	Demolition of existing house and garage and construction of a block of five purpose-built apartments
122-124 High Street, behind Tesco's 11894/APP/2024/3030 🌐 rralink.uk/j3j2c (Appeal ref 10331) DISMISSED 29/10/2025	Change of use of part of the rear of the building and upper floors from Class E (Commercial, Business and Service) to Class C3 (Dwellings) in order to create six residential dwellings alongside associated works.
10A Church Avenue 14922/APP/2025/598 🌐 rralink.uk/jbbhx (Appeal ref 10328) ALLOWED 13/10/2025	Installation of hardstanding to the side of the property.
15 Manor Road 29504/APP/2025/313 🌐 rralink.uk/yf6qy (Appeal ref 10327) DISMISSED 17/10/2025	Erection of a two-storey side and rear extension following demolition of existing garage.
Bus shelter o/s 166 High Street 79313/ADV/2025/10 🌐 rralink.uk/hcqhm (Appeal ref 10320) DISMISSED 04/09/2025	Installation of an internally illuminated LCD screen incorporated into the structure of an existing bus stop.

For more details of new plans submitted and decisions in the Conservation areas please refer to the planning section of our website:

🌐 www.ruislipresidents.org.uk/about-ruislip/planning/

OTHER PARTS OF RUISLIP

RECENT PLANNING SUBMISSIONS

Address	Application
4 Willow Grove 74874/APP/2025/2880 📍 rralink.uk/tgqhf Amended 27/01/26	Erection of outbuilding to rear garden, rear patio alteration to include Part M compliant ramp, demolition of front boundary wall and proposed dropped kerb
149 Herlwyn Avenue 19188/APP/2025/3239* 📍 rralink.uk/sgs5r	Construction of rear extension, hip-to-gable roof conversion and rear dormer, and conversion of property from Class C3 (dwellinghouse) to Class C4 (small HMO) for up to 6 persons (Part-Retrospective).
Silver Birches, Tile Kiln Lane 75438/APP/2025/3100 📍 rralink.uk/b5zxu	Variation of Condition 10 (Approved Drawing) of planning permission ref. 75438/APP/2021/3910, dated 01/06/2022 (Variation of Condition 2 (Approved Plans) of planning permission ref. 75438/APP/2021/1439 dated 6th August 2021 (Erection of a detached 5 bed dwelling with associated parking and amenity space including demolition of existing dwelling). Amendments sought to positioning of and reduction in width of the dwelling, dimensions of the garage and rebuilding of garden walls) to remove obscure glazing
Old Clack Farm, Tile Kiln Lane 42413/APP/2025/3240 & 3241 📍 rralink.uk/vkeyr 📍 rralink.uk/9uy23	Part demolition, alterations and extension to the dwellinghouse and barn. (<i>Application for Listed Building Consent</i>)

*Subject to Enforcement Ref ENF/19/26 - "Unauthorised roof extension and COU to HMO"

UNDECIDED PLANS

At 62 Broadwood Avenue, Ref: 22799/AP-P/2025/1756, proposals for Erection of new single dwellinghouse, following demolition of existing dwellinghouse, with

associated parking landscaping, bin and cycle storage have not been decided. The redevelopment proposals at The Barn Hotel, Ref: 7969/APP/2024/2451 & 2452 are still under consideration. ♦

RECENT APPEAL DECISIONS

Address	Application
11 - 17 Victoria Road 72104/APP/2025/1096 📍 rralink.uk/dned2 (Appeal ref 10336) DISMISSED 21/11/2025	Erection of ground floor rear extension and three-storey extension above existing commercial parade to provide 7 residential units (Class C3) (2 x 1 bed, 2 person units, 4 x 2 bed, 3 person units and 1 x 3 bed, 5 person unit)

RUISLIP RESIDENTS' ASSOCIATION

ANNUAL GENERAL MEETING

7.45pm, Wednesday, 25th March 2026

St Paul's Church,

Thurlstone Road, Ruislip Manor HA4 0BP

Doors open at 7.30pm

The Guest Speaker will be Danny Beales MP, Member of Parliament for Uxbridge and South Ruislip, followed by the Annual General Meeting and an Open Forum, with questions to a panel of RRA representatives. The meeting will end at 10pm. Wine, fruit juice and nibbles will be served.

Open Forum items to the Secretary by Wednesday, 18th March 2026.

Subscribe to our email newsletter

We would like to stay in touch via email newsletters between the printed issues of the *Town Crier*. We have already been emailing residents with news about the Barn redevelopment, Lidl's Orchard plans, public consultations and other topical subjects. Please consider subscribing:

🌐 www.ruislipresidents.org.uk/newsletter

